

Prolog Mobile

Bringing Prolog Project Management to the Field

PROLOG MOBILE, NATIVELY BUILT FOR THE IPAD, LETS YOU ACCESS AND CAPTURE PROLOG PROJECT INFORMATION WITHOUT ANY SPECIAL INTEGRATION, WITH OR WITHOUT AN INTERNET CONNECTION. DATA IS COLLECTED IN REAL TIME FROM THE FIELD AND SYNCHRONIZED WITH PROLOG BACK IN THE OFFICE, CREATING A COMPLETE SYSTEM OF RECORD FOR ALL PROJECT DATA.

The power of Prolog in the Field

Prolog Mobile leverages the power of Prolog in the field and works seamlessly with any Prolog client. With access to Prolog's File Management system, you can review drawings, documents, manuals or any other files that are stored in Prolog. Data is synchronized and stored directly in the Prolog database, without any special integration.

Develop checklist templates with optional response fields, or use pre-existing PDF checklists. Prolog Mobile makes it easy to track project items to ensure your processes and procedures are being adhered to in the field, improving safety and quality. You can also easily create links to other Prolog records (e.g. Issue, RFI, Safety Notice) right from the checklist item.

There's no need to worry about re-creating your access control, Prolog's Project and Form security also applies to Prolog Mobile. Additionally, Prolog Mobile supports Prolog's Nomenclature and User Defined Fields (UDF) and utilizes Prolog's notifications to allow users to trigger and receive notifications.

Capture Photo, Audio, and Video

With Prolog Mobile, you can use the iPad to record photos, audio or videos and attach them to the record in Prolog. No need to type in the details of an issue or a punch list item when you can record a video or an audio recording or take a photo and annotate it – reducing the need for clarification and re-work. You also have the option to upload multimedia and store into Prolog File Management without attaching to a Prolog record.

Works With or Without an Internet Connection

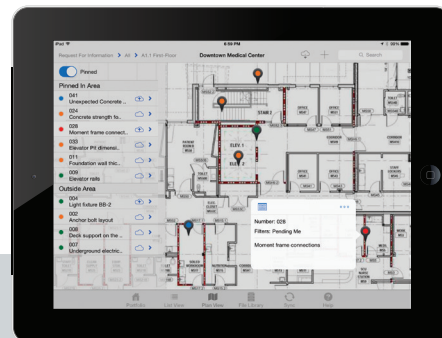
Hit-or-miss connectivity? No need to worry – Prolog Mobile works with or without an Internet connection so you can collect the data you need, when you need it, where you need it.

Available in Self-Host and SaaS Deployment

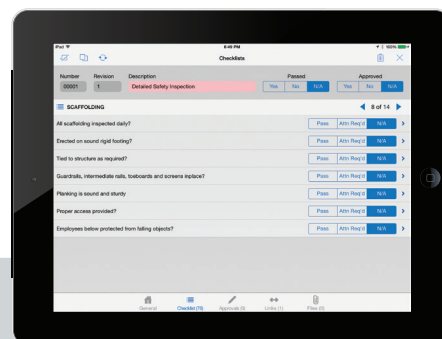
Whether your strategy is to host your own software or to utilize Software as a Service or a Managed Host deployment, Prolog Mobile is the right fit.

Benefits

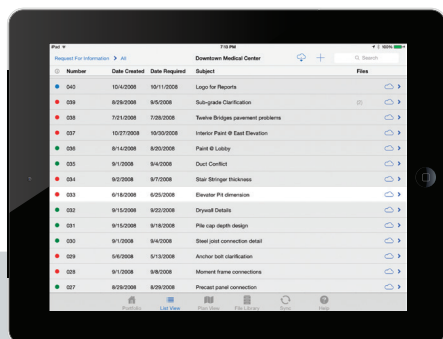
- **Increased collaboration:** using checklists to track project items in the field to improve construction-related processes, especially those related to safety and quality.
- **Gain efficiency:** capture photo, audio and video without having to type out the details of an issue.
- **Material Tracking:** track and manage material through its entire lifecycle.
- **Versatile:** works with or without an Internet connection, various hosting options available.



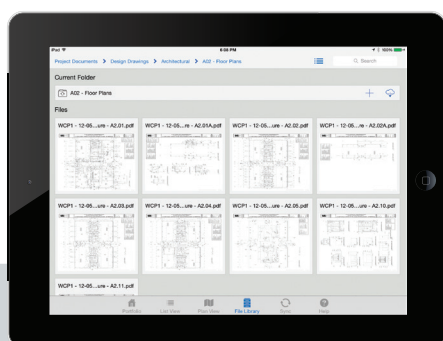
Capture critical project data in the field including safety notices, RFIs, Punch Lists and more.



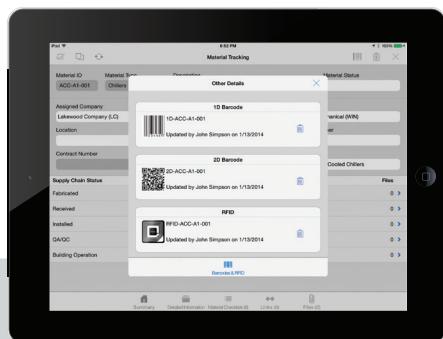
Develop templates for checklist items with optional response fields or use pre-existing PDF checklists.



Prolog Mobile works seamlessly with Prolog Manager or Prolog Converge.



Easily bring all your drawings, specs, and operating manuals onto the jobsite with you. With quick thumbnail navigation, zoom in to as much detail as you need.



Track and manage equipment & material through its entire lifecycle. Supports use of Barcode and RFID technologies to promote operational efficiency and error-free data collection.

ACTIVITIES

ADVANTAGE

Daily Construction Reports

- Record daily construction activities, weather and general conditions for each project

Punch List Tracking

- Reduce time required to complete a punch list

RFIs

- Reduce response time and impact on project schedule

Submittal Registry

- Track and manage required submittals to improve timeliness and ensure compliance with design intent

Safety Notices

- Reduce safety violations and accidents through safety management

Inspections and Tests

- Verify compliance with required inspections and tests

Events

- Track production and milestone events

Field Work Directives

- Reduce risk of surprise changes (for authorized work)

Hot Lists

- Track follow-up items

Issues

- Create an issue history to record all information related to specific issues

Notices to Comply

- Increase quality control on a project

Document Viewing

- Full access to the Prolog Document Management System

Material Inventory

- Document all deliveries and associated inventory

Material Tracking

- Track and Manage Material through its entire lifecycle, from initial design through maintenance, including all the steps in between, such as fabrication, transport, receipt, installation, and QA/QC. Supports integrated barcode/RFID scanning to minimize errors and maximize efficiency.

Checklists

- Track project items with checklist templates or pre-existing PDF checklists

Plan View

- Identify Prolog records on a floor plan; click and drill down to the item for more information